

# DPM 48 x 96 4 ½ DIGIT VDC – C / F

## Operating Manual

The DPM 48 x 96 VDC is a Digital Panel Meter (DPM) in 48 x 96 size for measurement of DC mV with 4 ranges And DC Voltage with 5 ranges. Four ranges for power supply are available.

## Operation :

By changing short links decimal point can be adjusted as shown in sticker on page 2.  
The full scale value on the display can be adjusted on site with potentiometer at the rear side of the instrument from 10% to 100% of FSD (FSD = 19999). Similarly it is possible to adjust the zero with the help of potentiometer at the rear side

Further DPM 48x96 ADC version from the series :  
DPM 48 x 96 ADC Instrument for DC Current measurement.

## Technical Data:

<b>Display</b>	Display range	19999
	Decimal point position	selectable by short links at the Rear side.
	Negative display indication	"_"
	Digit height	14 mm / 7- segment digits
	Overload indication	last 4 digits blank (1 ).
<b>Measuring ranges</b>	Accuracy for mV	< 0.1 % + 1 digit.
(Max overload	Accuracy for Voltage	< 0.1 % + 1 digit
20% of Full scale range value)	DC mV	0 ... 60 mV / 0 ... 75 mV
	(Input Current < 300 uA)	0 ... 150 mV
		0 ... 200 mV.
	DC Voltage	0 ... 2 V.
		0 ... 20 V.
		0 ... 200 V.
		0 ... 500 V.
		0 ... 1000 V.
	Temperature coefficient	300 ppm / °C, plus.
	zero point drift	200 ppm / °C.
	Range adjustment span	from 10% to 100% of range.
<b>Power supply</b>	Direct voltage DC	24 V +/-15 % max.5.5 W (isolated).
	Alternating voltage AC	110 V +10 %, -15% max 5.5 W (isolated).
	(47 - 60 Hz)	110 V +10 %, -15% max.5.5 W (isolated).
		230 V +10 %, -15% max.5.5 W (isolated).
<b>Environmental conditions</b>	Climatic class	Class 2 to VDE / DIN 3540.
	Operating temperature	0 ... 55 °C.
	Storage temperature	-25 °C ... +65 °C.
	Safety class	II to IEC 348 / VDE 0411.
	IP Protection	IEC EN 60 529.
		For Back : IP 20.
		Front : IP 50 ( IP 54 on request ).
	Device safety	According to IEC EN 61 010.
	EMC immunity	According to IEC / EN 61 000-4-1 up to 4.
	EMC radiated interference	According to IEC / EN 61326 class B.
<b>Dimensions and weights</b>	Front bezel size	96 mm x 48 mm DIN 43 718.
	Panel cut-out	92 + 0.8 mm x 43.5 + 0.6 mm.
	Overall depth	138 mm.
	Weight Approx.	500 gm.
<b>Sundry</b>	Connections	Plug and screw terminal blocks.



# DPM 48 x 96 4 1/2 DIGIT VDC – C / F

## Sample sticker

DPM 48X96 4 1/2 VCD-C		Sr. No. / /	
Range: 0... 20mA		Display: - 19999	
Aux Supply	A	N(-)	230 VAC, 50 Hz
	B	L(-)	(+10 % -15 %)
Input Current (I)	1	LO	COMMON
	2	HI	0... 20 mA
	3	HI	4... 20 mA
	5	—	Short the Terminals 5 & 6 for 4... 20 mA Input range
	6	—	
Decimal Point Adjustment	XXXXX X.XXXX XX.XXX XXX.XX XXXX.X		
Decimal Point	Zero Adj.	Span Adj.	Short Link
Measuring Input		Aux. Supply	
+(-) (-(-)		+(-) (-(-)	
10987	0	0	65
4321		B A	

DPM 48X96 4 1/2 VDC - F		Sr. No. / /	
Range: 0... 500 V		Display: 19999	
Aux Supply	A	N (-)	110 VDC
	B	L (+)	(+10 % -15 %)
Input Voltage	1	LO	COMMON
	4	HI	0... 2V DC, 0... 20V DC, 0... 200 V DC, 0... 500 V DC, 0... 1000 V DC.
XXXXX X.XXXX XX.XXX XXX.XX XXXX.X			
Decimal Point	Span Adj.	Measuring Input	Aux. Supply
+(-) (-(-)		+(-) (-(-)	
10987	0	4321	B A

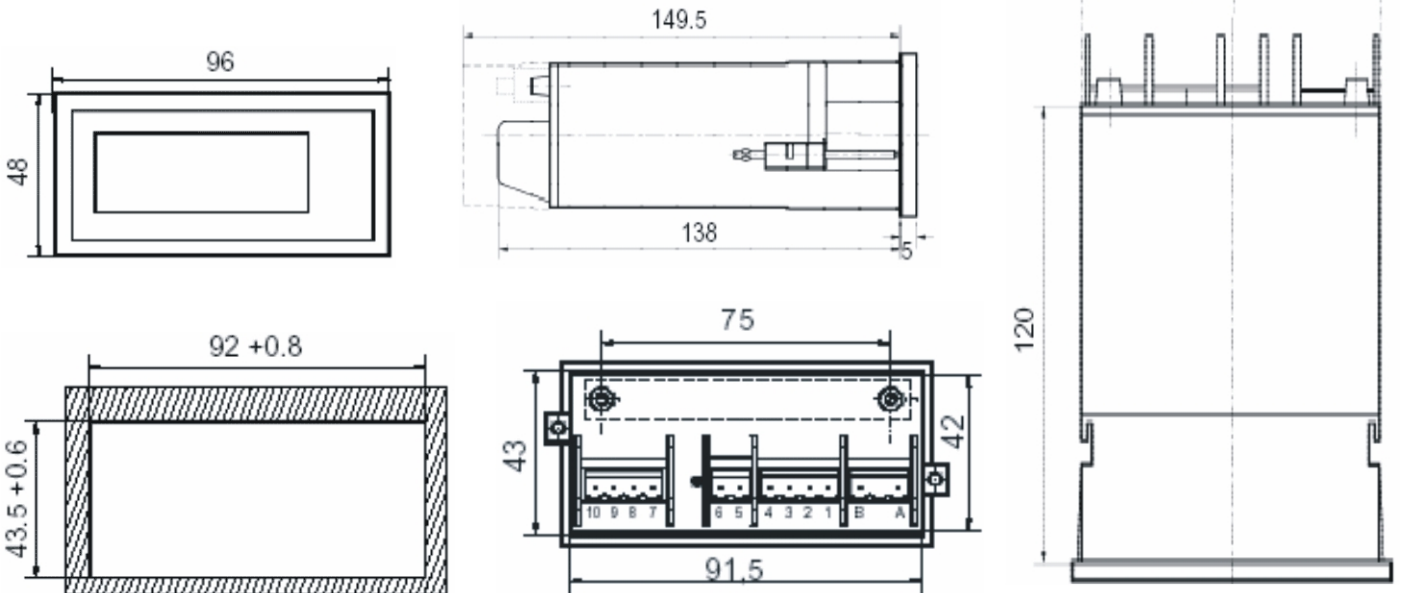
## Measuring Input

Aux. Supply  
 Decimal point adjustment  
 Display adjust ( with external calibrator )  
 mV DC Input

Terminals A (-/N) and B (+/L)  
 With shorts links at rear side.  
 With pots at rear side of the meter.  
 0...60 mV / 75 mV Terminal 1 & 2.  
 0...150 mV Terminal 1 & 3.  
 0...200 mV Terminal 1 & 4.

0 ... 2 VDC Terminals 1 and 4 or  
 0 ... 20V DC Terminals 1 and 4 or  
 0 ... 200V DC Terminals 1 and 4 or  
 0 ... 500V DC Terminals 1 and 4 or  
 0 ... 1000V Terminals 1 and 4.

V DC Input



Installation Cutout

Mounting Position



**Caution :** Do not change the short links on Display (for decimal point adjustment) when the input is applied to the DPM.



**RISHABH INSTRUMENTS**  
 Measure, Control & Record with a Difference

**RISHABH INSTRUMENTS PVT.LTD.**  
 F-31, MIDC, Satpur, Nashik-422 007, India.  
 Tel.: +91 253 2202160, 2202202 Fax : +91 253 2351064  
 E-mail : India :- marketing@rishabh.co.in  
 International :- exp.marketing@rishabh.co.in  
 www.rishabh.co.in