

# ND20 METER OF NETWORK PARAMETERS

## FEATURES:

- LPConfig Program
- RTC
- MOD BUS
- Password protection
- IP65
- THD
- HARM
- P,Q C/L L/C
- Meas. of energy harmonics
- PAord
- Refresh icon

## INPUT:



## OUTPUTS:

- 0/4...20 mA
- RS 485
- Relay output symbol
- Pulse output symbol

## GALVANIC ISOLATION:

- Isolation symbol 1
- Isolation symbol 2
- Supply
- RS 485

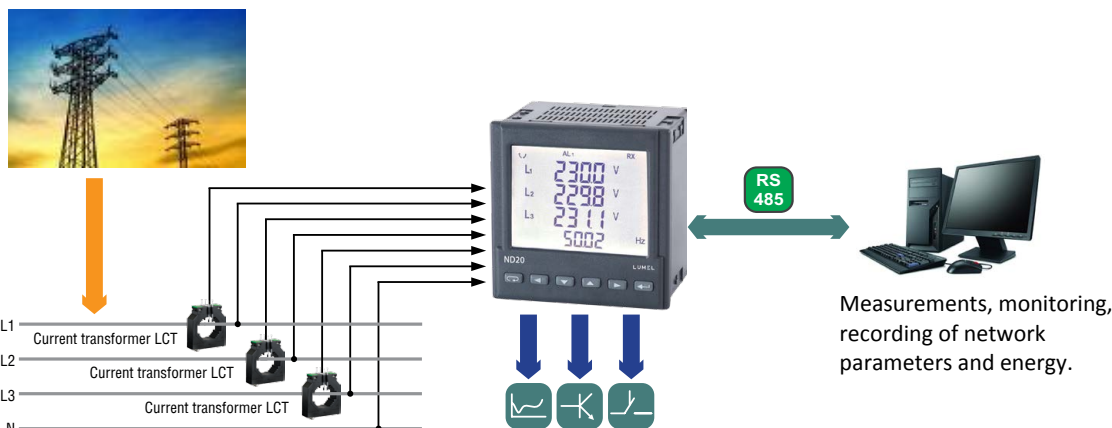
Export department:  
+48 68 45 75 139/321/368  
Fax: +48 68 32 54 091  
e-mail: export@lumel.com.pl

LUMEL S.A.  
ul. Sulechowska1  
65-022 Zielona Góra  
POLAND  
[WWW.LUMEL.COM.PL](http://WWW.LUMEL.COM.PL)



- Measurement of power network parameters in 2,3 or 4- wire balanced and unbalanced systems.
- High accuracy class.
- Indications considering values of programmed ratios.
- Harmonics of voltages and currents (selectively).
- THD factors for currents and voltages.
- Profile of 15, 30, 60-minutes' power (9000 measurements).
- Watt-hour meter for the selected harmonic.
- Backlit LCD 3.5" screen.
- Protection grade from the frontal side: IP65.
- Digital transmission to the master system through the RS-485 interface (MODBUS).
- Configurable analog, alarm and pulse outputs (energy).
- Configuration of displayed pages.

## EXAMPLE OF APPLICATION



## MEASURED QUANTITIES AND MEASURING RANGES

Measured value	Indication range*	Measuring range	L1	L2	L3	Σ	Basic error
Current In 1 A 5 A	0.00 ... 12 kA 0.00 ... 60 kA	0.002 ... 1.200 A~ 0.010 ... 6.000 A~	•	•	•		±0.2% r
Voltage L-N 57,7 V 230 V **	0.0 ... 280 kV 0.0 ... 1.104 MV	2.8 ... 70.0 V~ 11.5 ... 276 V~	•	•	•		±0.2% r
Voltage L-L 100 V 400 V **	0.0 ... 480 kV 0.0 ... 1.92 MV	5 ... 120 V~ 20 ... 480 V~	•	•	•		±0.5% r
Frequency	47.0 ... 63.0 Hz	47.0 ... 63.0 Hz	•	•	•		±0.2% mv
Active power	-9999 MW ... 0.00 W ... 9999 MW	-1.65 kW ... 1.4 W ... 1.65 kW	•	•	•	•	±0.5% r
Reactive power	-9999 Mvar ... 0.00 var ... 9999 Mvar	-1.65 kvar ... 1.4 var ... 1.65 kvar	•	•	•	•	±0.5% r
Apparent power	0.00 VA ... 9999 MVA	1.4 VA ... 1.65 kVA	•	•	•	•	±0.5% r
Power factor PF	-1 ... 0 ... 1	-1 ... 0 ... 1	•	•	•	•	±1% r
Tangent φ	-1.2...0...1.2	-1.2 ... 0 ... 1.2	•	•	•	•	±1% r
Cosinus φ	-1... 1	-1 ... 1	•	•	•	•	±1% r
φ	-180 ... 180	-180 ... 180	•	•	•		±0.5% r
Imported active energy	0 ... 99 999 999.9 kWh					•	±0.5% r
Exported active energy	0 ... 99 999 999.9 kWh					•	±0.5% r
Reactive inductive energy	0 ... 99 999 999.9 kvarh					•	±0.5% r
Reactive capacitive energy	0 ... 99 999 999.9 kvarh					•	±0.5% r
THD	0 ... 100%	0 ... 100%	•	•	•		±5% r

\* Depending on the set tr\_U ratio (ratio of the voltage transformer: 0.1...4000.0) and tr\_I ratio (ratio of the current transformer: 1...10000)

\*\* available also other meter executions (see ordering code)  
r - of the range  
mv - of the measured value

## OUTPUTS

Kind of output	Properties
Analog output	• 1 programmable current output 0/4...20 mA
Relay output	• programmable relay output, normally open voltageless contacts, load capacity 250 V~/0.5 A~
Pulse output of active or reactive energy	• 1 OC type, passive

### DIGITAL INTERFACE

Interface type	Transmission protocol	Mode	Baud rate
RS-485	MODBUS RTU	8N2, 8E1, 8O1, 8N1	4.8; 9.6; 19.2; 38.4 kbit/s

### EXTERNAL FEATURES

Readout field	LCD 3.5" screen,	specialized, monochromatic with backlit
Weight	< 0.3 kg	
Overall dimensions	96 × 96 × 77 mm	panel cut-out: 92.5 <sup>+0.6</sup> × 92.5 <sup>+0.6</sup> mm
Protection grade (acc. to EN 60529)	from frontal side: IP65	from terminal side: IP20

### RATED OPERATING CONDITIONS

Supply voltage	85...253 V a.c., 90...300 V d.c., 20...40 V a.c., 20...60 V d.c.	
Temperature	ambient: -25...23...55°C	storage: -30...70°C
Relative humidity	25...95%	inadmissible condensation
Operating position	any	
External magnetic field	0...40...400 A/m	
Short duration overload (1 s)	voltage input: 2Un (max. 1000 V)	current input: 10 In
Power consumption	- in the supply circuit ≤ 6 VA, - in the voltage and current circuits ≤ 0.05 VA	

### SAFETY AND COMPATIBILITY REQUIREMENTS

Electromagnetic compatibility	noise immunity	acc. to EN 61000-6-2
	noise emissions	acc. to EN 61000-6-4
Isolation between circuits	basic	acc. to EN 61010-1
Installation category	III	
Pollution level	2	
Maximal phase-to-earth voltage	- for supply and measuring circuits: 300 V - for other circuits: 50 V	
Altitude a.s.l.	< 2000m	

### ELECTRIC CONNECTIONS

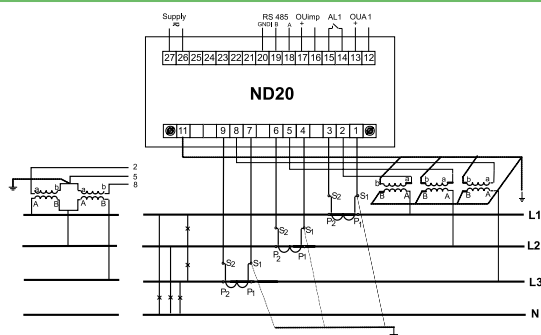


Fig 1. Meter connection diagrams in a 4-wire network.

#### Connections:

- direct, semi-indirect and indirect one-phase measurement,
- direct measurement in a 3-wire network,
- semi-indirect measurement in a 3-wire network,
- indirect measurement with the use of 3 current transformers and 2 or 3 voltage transformers in a 3-wire network,
- direct measurement in a 4-wire network,
- semi-indirect measurement in a 4-wire network,
- indirect measurement with the use of 3 current transformers and 2 or 3 voltage transformers in a 4-wire network

### ORDERING

<b>ANALYSER OF NETWORK PARAMETER ND20 -</b>	X	X	X	X	XX	X	X
<b>Current input In:</b>							
1 A (X/1)		1					
5 A (X/5)		2					
<b>Voltage input (phase/ phase-to-phase) Un:</b>							
3 x 57.7/100 V			1				
3 x 230/400 V			2				
3 x 290/ 500 V			3				
3 x 63.5/ 110 V			4				
3 x 69.9/120 V			5				
<b>Analog current output:</b>							
without analog output					0		
with programmable output 0(4) ... 20 mA					1		
<b>Supply voltage:</b>							
85...253 V a.c., 90...300 V d.c.				1			
20...40 V a.c., 20...60 V d.c.				2			
<b>Version:</b>							
standard						00	
custom-made*						XX	
<b>Language:</b>							
Polish							P
English							E
other*							X
<b>Acceptance tests:</b>							
without extra quality requirements							0
with an extra quality inspection certificate							1
acc. to customer's request*							X

#### EXAMPLE OF ORDER:

The code **ND20 - 2 2 1 1 00 E 0** means:  
**ND20** - meter of network parameters of ND20 type  
**2** - current input: 5A (X/5)  
**2** - input voltage (phase/phase-to-phase) Un = 3 x 230 V/ 400 V  
**1** - with programmable analog output  
**1** - supply voltage: 85...253 V a.c./ 90...300 V d.c.  
**00** - standard version  
**E** - all descriptions and user's manual in English  
**0** - without extra quality requirements.

\* - after agreeing with the manufacturer

### SEE ALSO:



Free eCon program for programming LUMEL's products. Available on our internet website.



Current transformers.



P43 - three-phase transducer of power network parameters.

For more information about LUMEL's products please visit our website:  
[www.lumel.com.pl](http://www.lumel.com.pl)

**Export department:**  
 +48 68 45 75 139/321/368  
 Fax: +48 68 32 54 091  
 e-mail: [export@lumel.com.pl](mailto:export@lumel.com.pl)

LUMEL S.A.  
 ul. Sulechowska1  
 65-022 Zielona Góra  
 POLAND  
**WWW.LUMEL.COM.PL**