



## DIGITAL PANEL METERS N24,N25 TYPES



***Manual for the Configuration of N24 and N25 Meters  
by means of the LPCon Program***

## Contents

<b>1. Meter Configuration by means of the LPCon Program.....</b>	<b>3</b>
1.1. Configuration of Measurement Parameters.....	3
1.2. Configuration of the Individual Characteristic.....	4
1.3. Readout of the Measured Value.....	5

# 1. Meter Configuration by means of the LPCon Program

The LPCon program is destined for the N24 and N25 meter configuration. One must connect the meter with the PC computer through the PD14 programmer and configure the connection choosing from the **Option → Connection configuration** menu ( for the P20H transducer, we select the address 1, baud rate 9600 kb/s, RTU 8N2 mode, time out 1000 and the suitable port COM, under which the PD14 programmer controller has been installed).

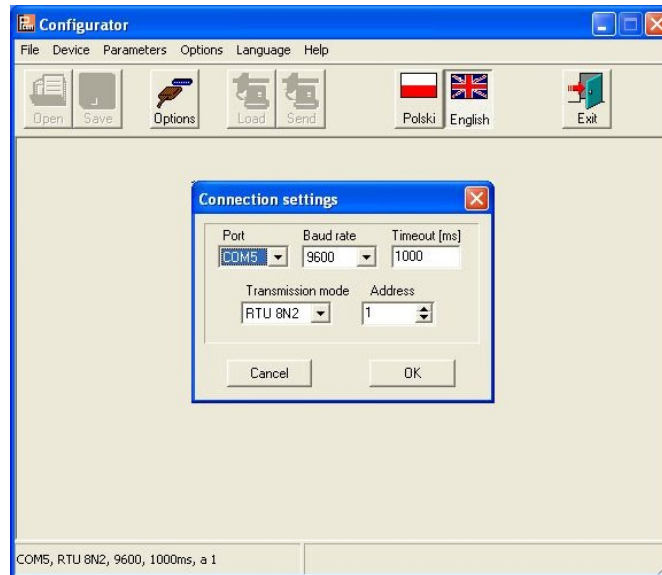
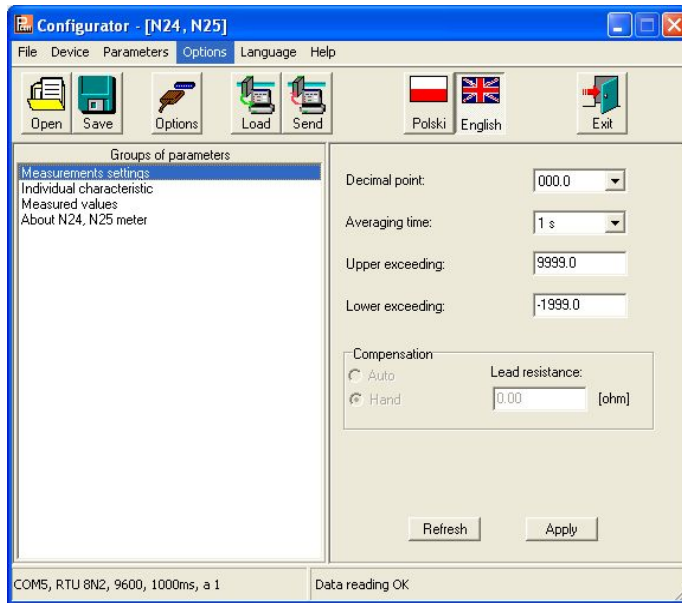


Fig.1 Connection configuration with the N24/25 meter

After the connection configuration one must choose the **Device → P meters → N24** menu and next click the **Readout** icon in order to read out all parameters. One can also read out parameters individually in each group, clicking the **Refresh** button. In order to change parameters, one must write the new value in the parameter window and click the **Apply** button.

## 1.1. Configuration of Measurement Parameters

In the "Measurement parameters" parameter group, one can select the decimal point, the measurement averaging time, lower and upper limits, above and below which the exceeding is displayed. Additionally, in N24 and N25 versions, one can select the kind of wire compensation for PT100 and the temperature of thermocouple ends. Changes must be confirmed clicking the **Apply** button.



**Fig. 2. View of the “Measurement parameters” window of the LPCon program.**

### 1.2. Configuration of the Individual Characteristic

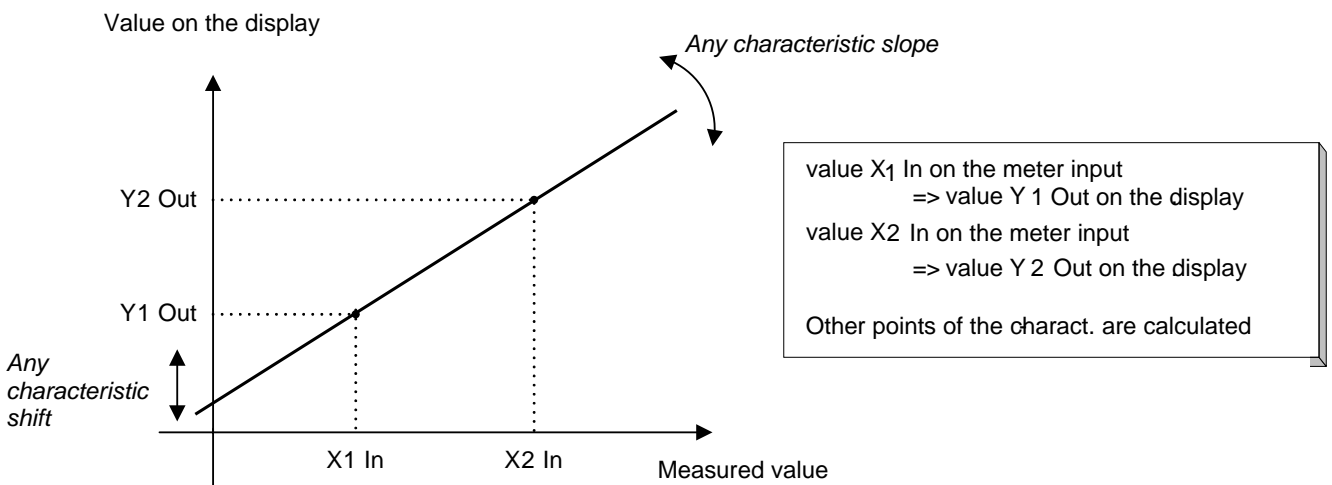
In the “Individual characteristic” group, one can turn on or off the individual characteristic and put **a** and **b** parameters in, for recounting the measured value. On the base of given coordinates of two points by the user, the program determines (from the system of equations) coefficients **a** and **b** of the individual characteristic. Changes must be confirmed by clicking the **Apply** button.

$$\begin{cases} Y1Out = a \cdot X1In + b \\ Y2Out = a \cdot X2In + b \end{cases}$$

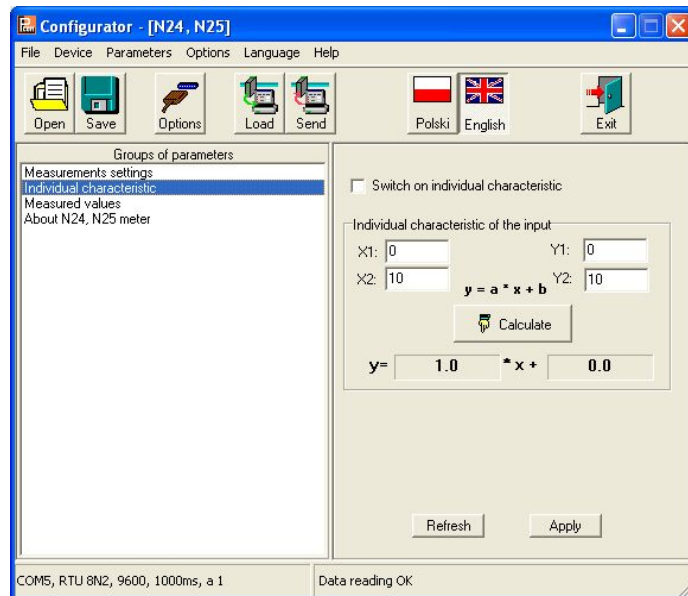
where:

X1 In and X2 In – measured value

Y1 Out and Y2 Out – expected value on the display



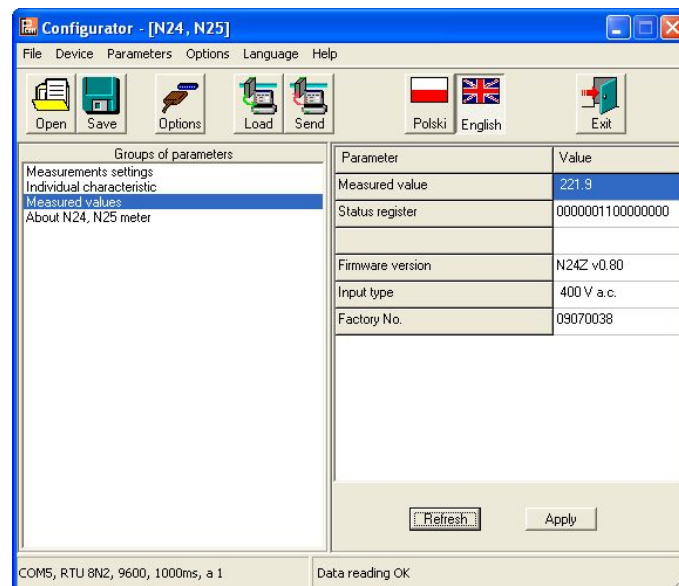
**Fig.3. Individual characteristic**



**Fig.4. View of the “individual characteristic” window of the LPCon program**

### 1.3. Readout of the Measured Value

By means of the LPCon program, one can also read out the currently measured value, the programming version together with the input execution and read out the manufacturer’s serial number. These quantities are inserted in the **Measured Values** window.



**Fig. 5. View of the “measured values” window of the LPCon program.**



**Lubuskie Zakłady Aparatów Elektrycznych - LUMEL S.A.**  
ul. Sulechowska 1, 65-022 Zielona Góra

tel.: (48-68) 329 51 00 (exchange)

fax: (48-68) 329 51 01

e-mail: [lumel@lumel.com.pl](mailto:lumel@lumel.com.pl)

<http://www.lumel.com.pl>

**Export Department:**

Tel.: (48-68) 329 53 02 or 53 04

Fax: (48-68) 325 40 91

e-mail: [export@lumel.com.pl](mailto:export@lumel.com.pl)