

Software Installation Manual



DMM Datalogger

Installation Procedure for DMM Datalogger Software

Sections:

1. Computer Minimum Configuration
2. Setup Procedure

1. COMPUTER MINIMUM CONFIGURATION

- Pentium IV & Higher Processor
- 2 GB RAM
- 50MB Hard drive space
- CD-ROM Drive
- Window 7 and above
- USB Port (USB2.0): 1 USB Port Per Device
- 800 x 600 or Higher Monitor Resolution
- Window Supported Printer, if printout is required
- .NET Framework 4.0 or higher pre-installed

2. SETUP PROCEDURE

- During Installation, administrator priviliages are required for logged-in user.
- Insert Multimeter Software CD in CD-ROM
- Open CD-ROM
- Open “DMM Datalogger” Folder
- Run DMM Datalogger Setup.exe

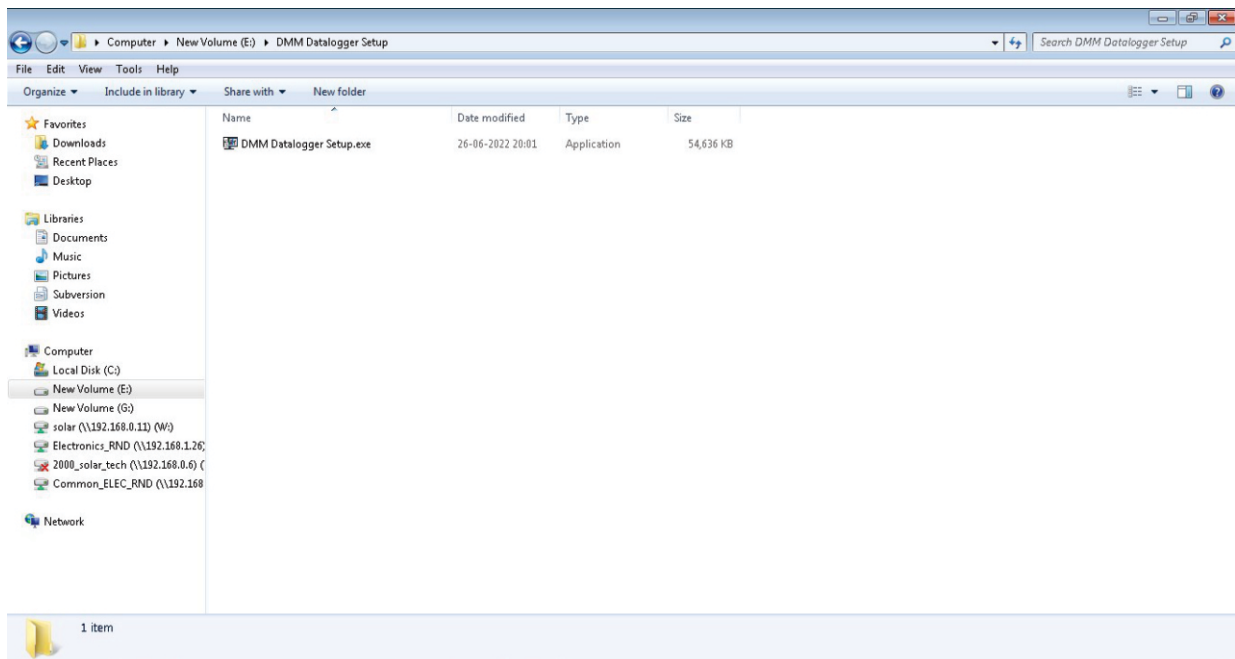


Fig 1. Setup File

Stage 1: Installation of Multimeter Software

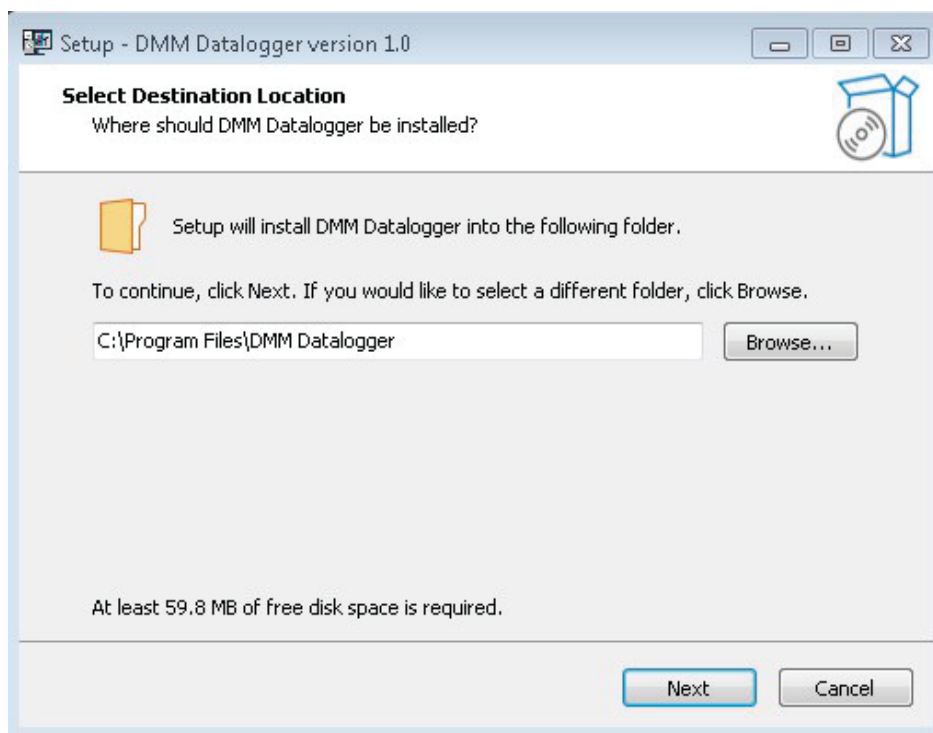


Fig 2. Rishabh Datalogger Step 1

- Click on Next.

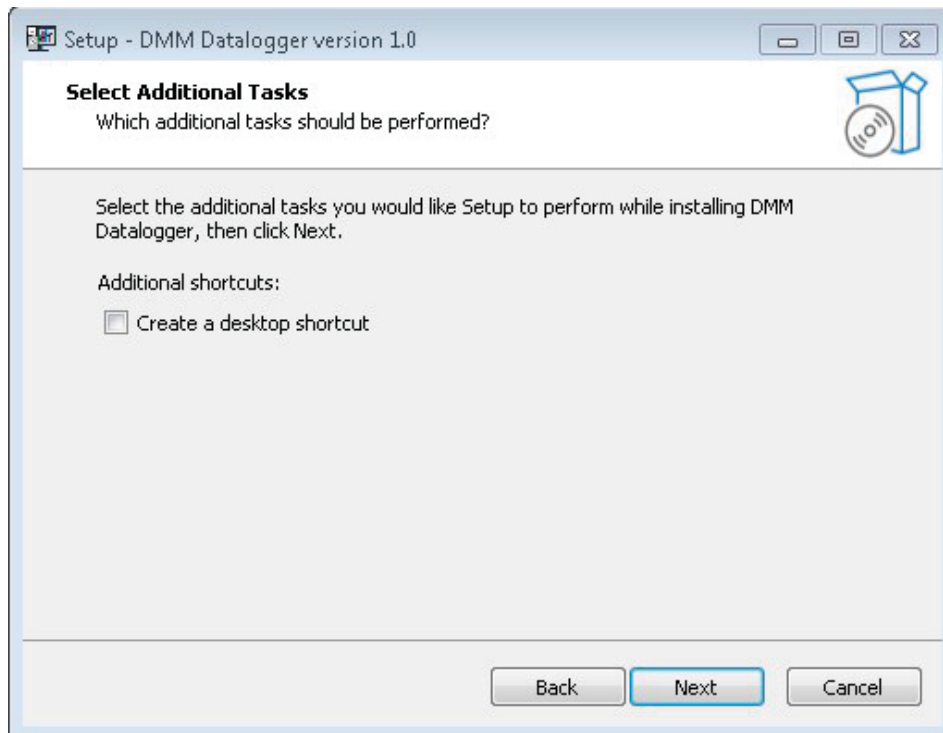


Fig 3. Rishabh Datalogger Step 2

- Now select the checkbox to create a desktop shortcut if required and click on next.

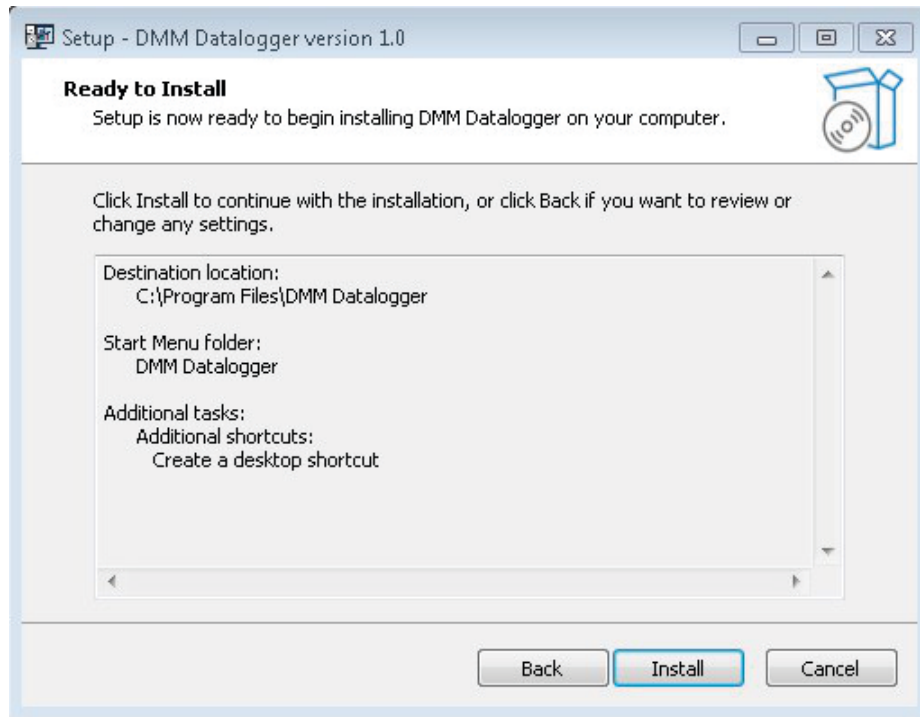


Fig 4. Rishabh Datalogger Step 3

- Click on Install.

Stage 2: Installation of Device Driver (FTDI CDM Driver)

- The setup will now ask to install USB Driver (FTDI CDM Driver).
- If your system has *FTDI CDM Driver* installed then you can skip this stage by clicking on “Cancel”.

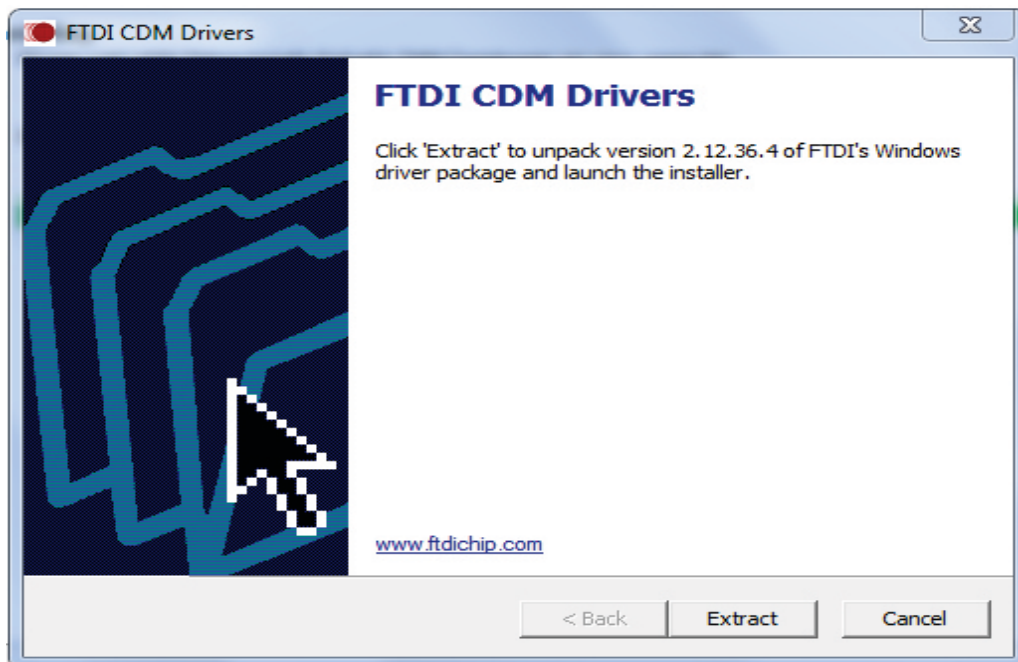


Fig 5. USB Driver Setup

- Click on Extract.

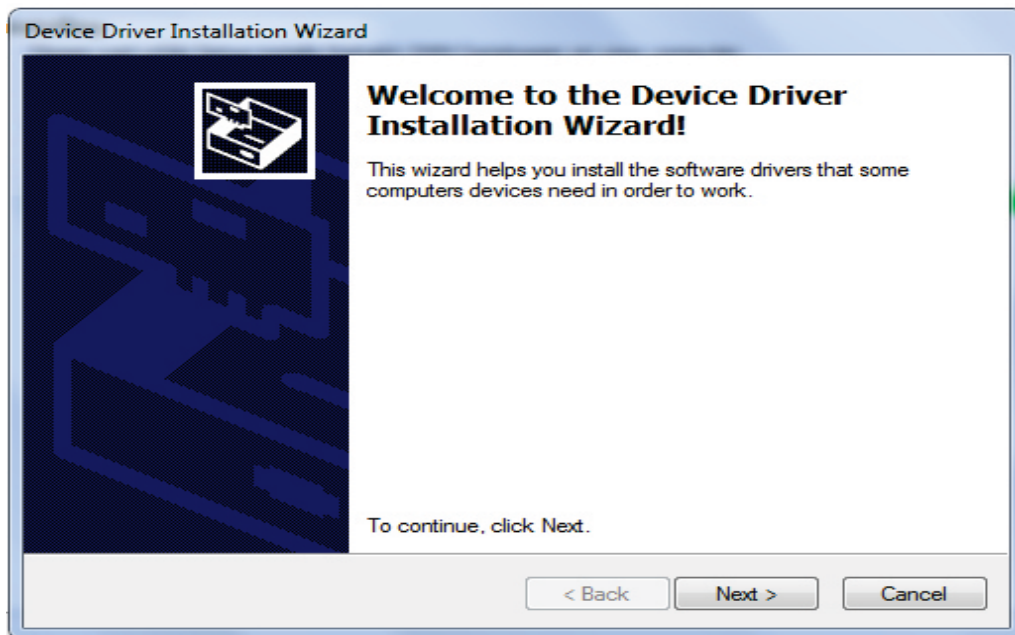


Fig 6. Driver Setup Step 1

- Click on Next.

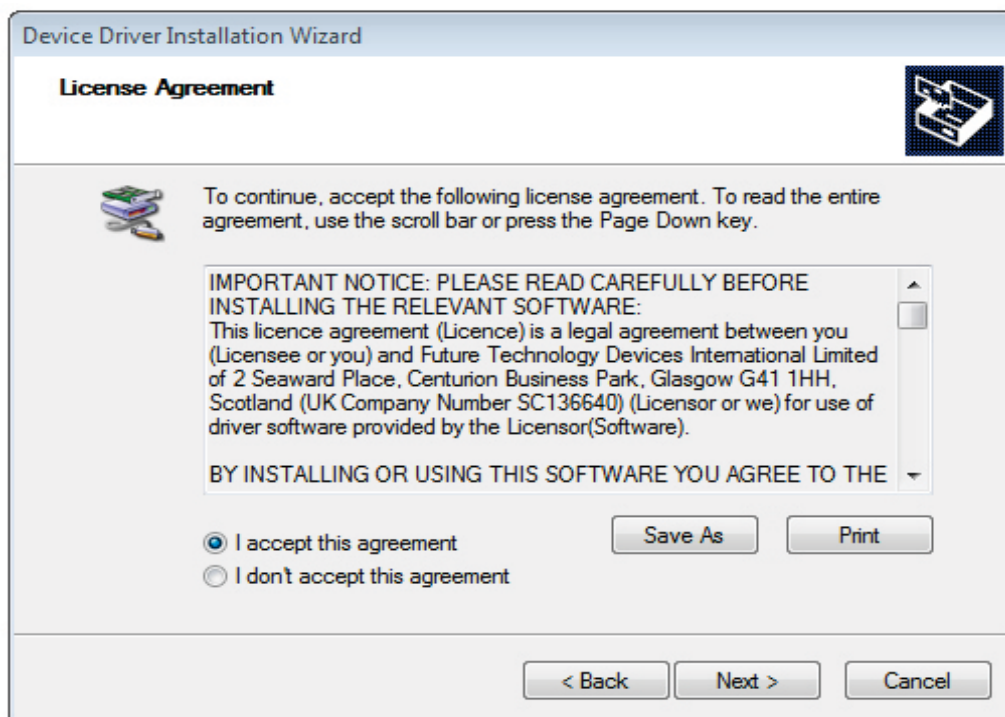


Fig 7. Driver Setup Step 2

- Click on I accept this agreement & then Click on Next. After clicking on Next button Device Driver installation start.

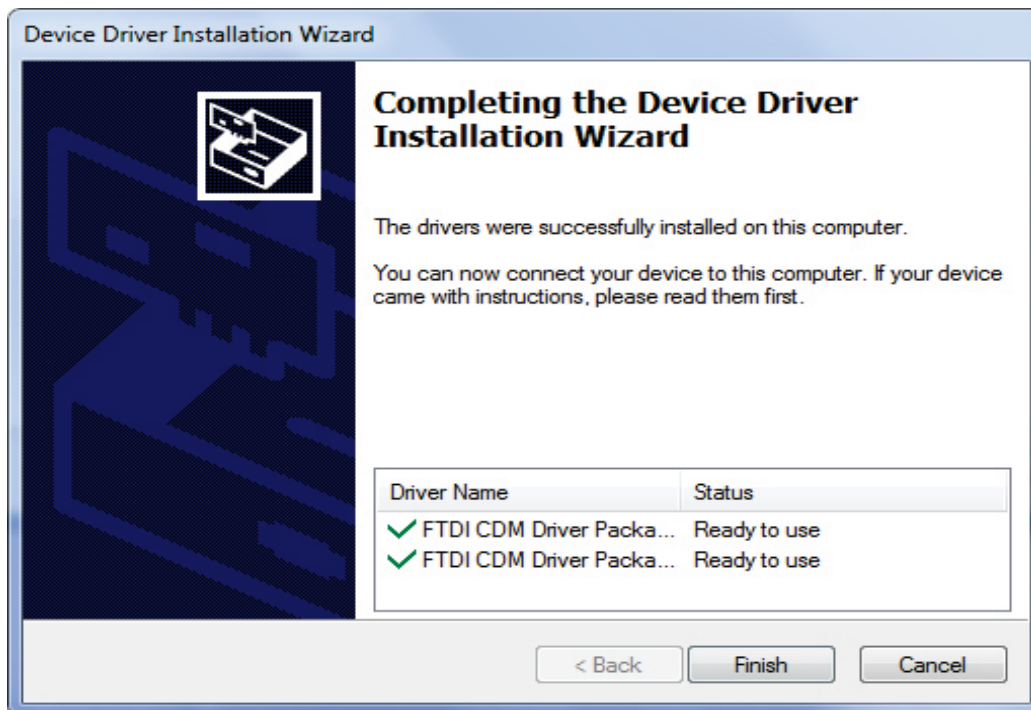


Fig 8. Driver Setup Finish

- Click on Finish to complete Device Driver Installation.

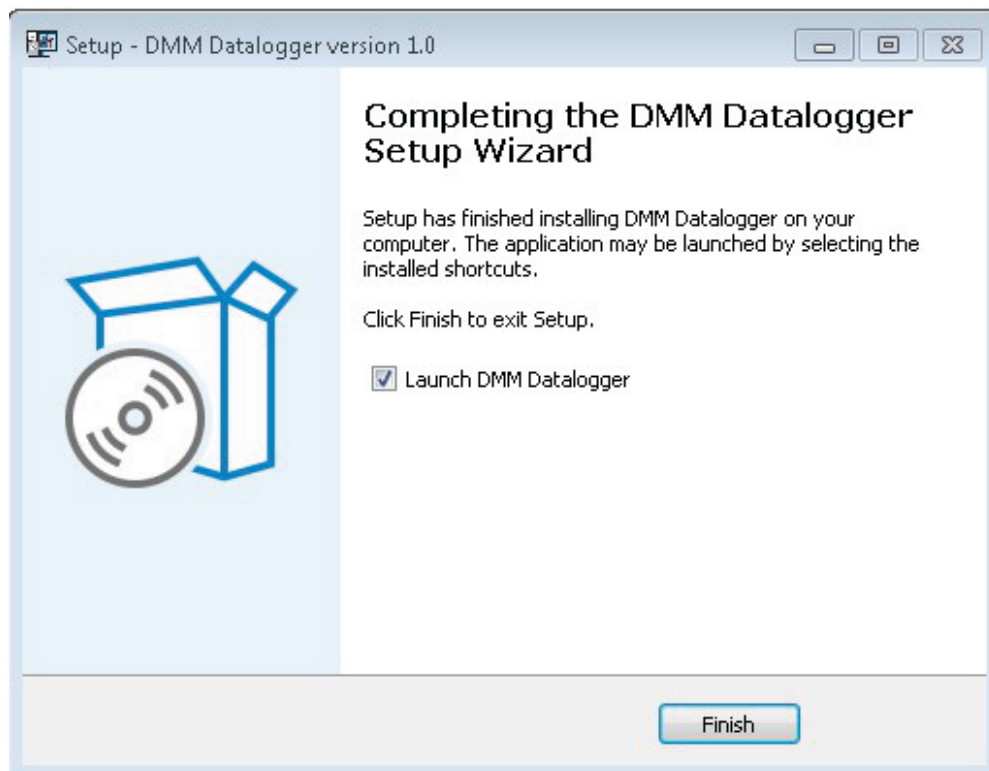


Fig 9. Rishabh Datalogger Setup Finish

- Click on Finish to finish the installation of Complete Software. Now you can use the Software for datalogging and parameter configuration. For understanding Software features, refer the ***DMM Datalogger Software Manual***.