

Bluetooth Installation Manual



Bluetooth Installation and Connection with Logger

Installation Procedure for Bluetooth for different Window's System.

Sections:

1. Window Xp
2. Window 7
3. Window 8
4. Window 10

1. Window Xp:

- a. Right click on Bluetooth icon in icon menu.

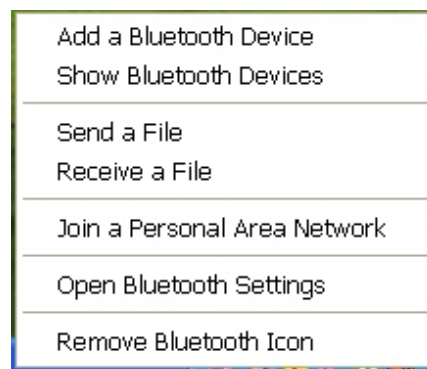


Fig. a : Bluetooth Menu

- b. Click on Add a Bluetooth Device. It will start to search the device. After searching gets completed, Select the Rishabh Bluetooth Meter and click on NEXT.



Fig. b: Add Bluetooth Device Wizard

c. After clicking NEXT, we have to enter pass key for device being get paired. The pass key is "0000".

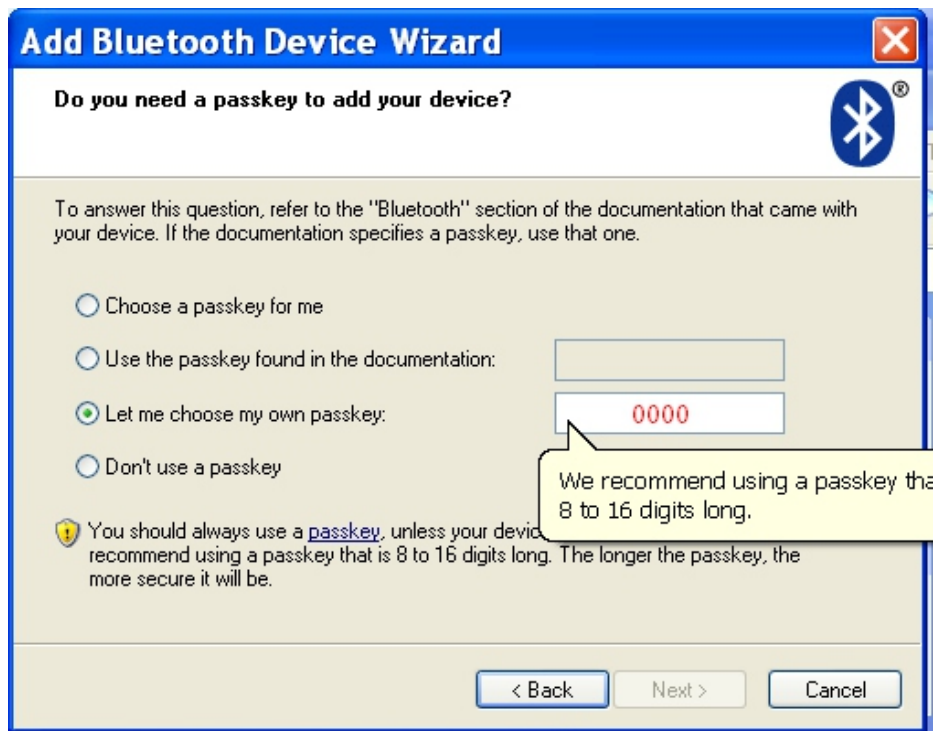


Fig. c: Passkey Enter

d. After pass key has been entered, click on NEXT button. Now it will install driver and generate the COM port as show in fig.



Fig. d: Com port

e. After com port is generated, we have to disable the Incoming port because outgoing com port is required for data logger software. Disabling of com port can be done through device manager as show in fig. e. After disabling the com port is shown in fig f.



Fig. e: Device Manager



Fig. f: Incoming com port disabled

f. After com port disabled, open Rishabh DataLogger Software.

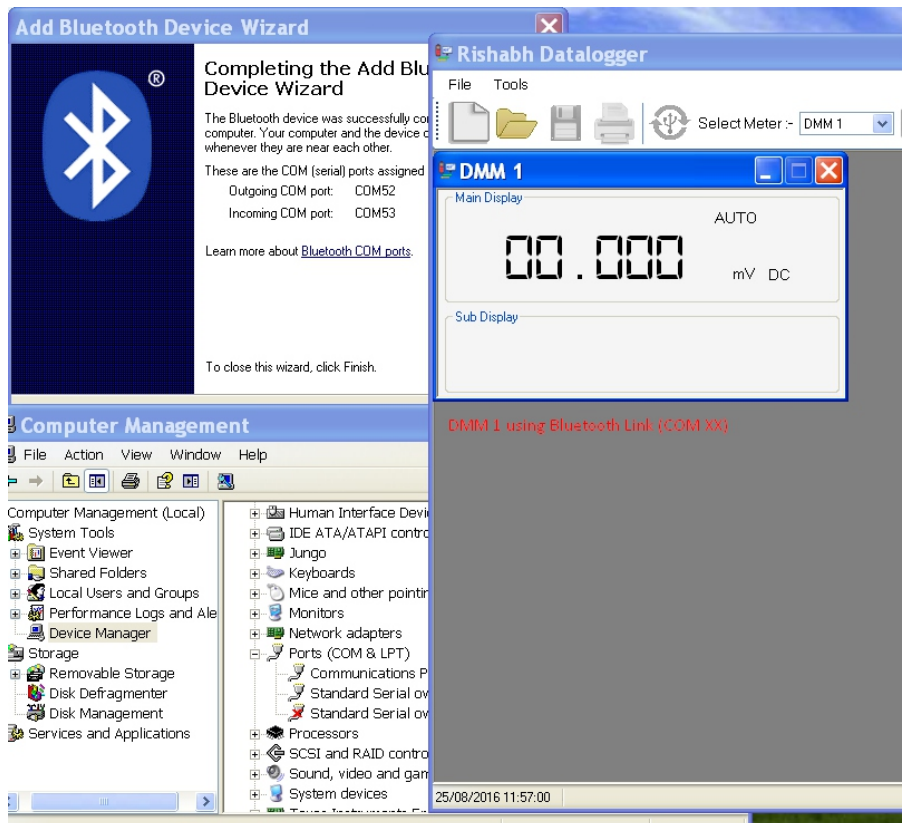


Fig. g: DataLogger Software

2. Window 7

a. Right click on Bluetooth icon.

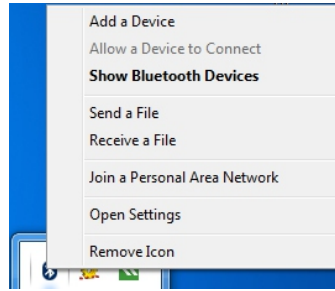


Fig. h: Bluetooth option

b. Click on Add a Device. It will start the search of Bluetooth device. Select the appropriate device from the list.

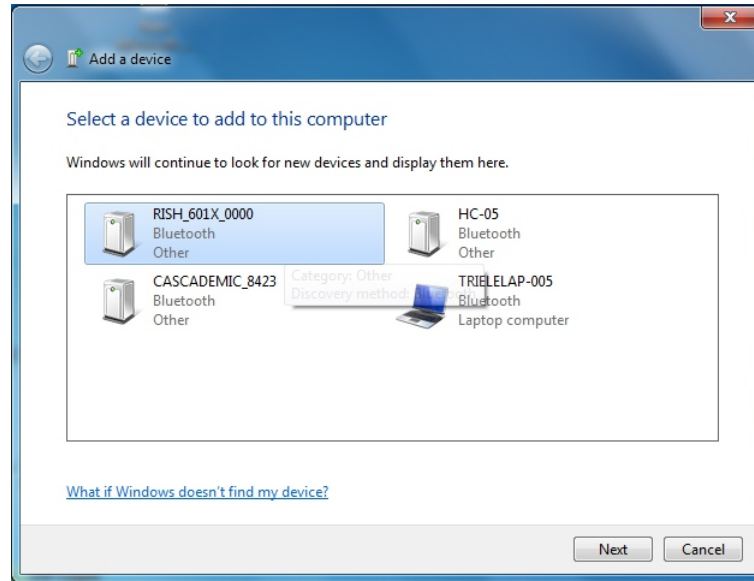


Fig. i: Device Search List

c. Select the Device and Click on NEXT. It will ask for select a pairing option.

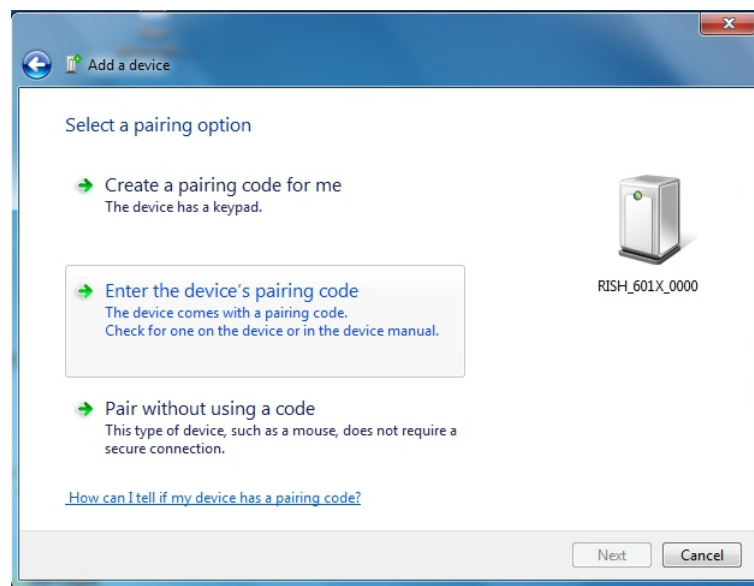


Fig. j: Pairing Option

d. Select ENTER THE DEVICE'S PAIRING CODE & enter the pass key "0000".

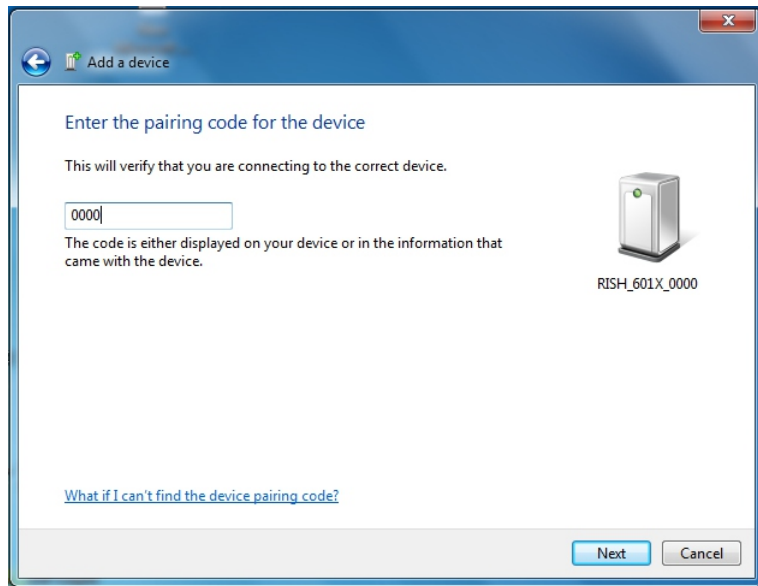


Fig. k: Pairing Code

e. After clicking on NEXT, it will add the device.

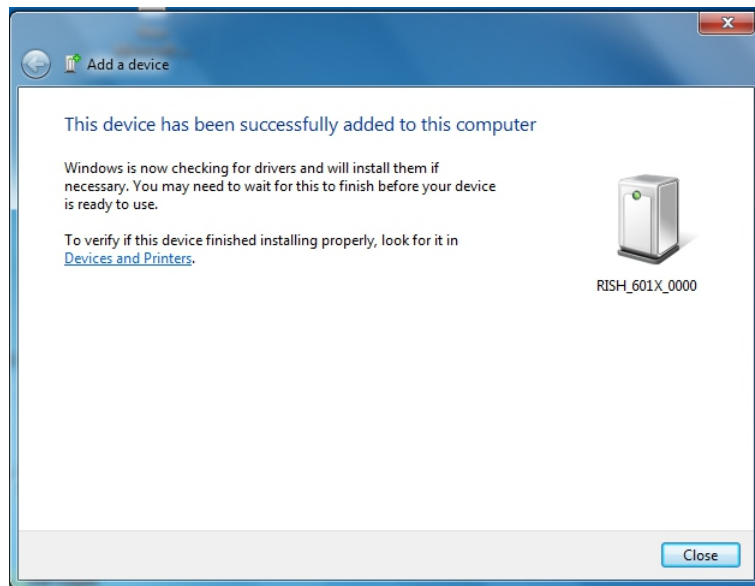


Fig. l: Device Added Successfully

f. Click on CLOSE. Now again click on Bluetooth icon and then click on "Open Setting" (Refer fig.h). Click on COM PORT. Select the Incoming Port and the Click on "REMOVE".

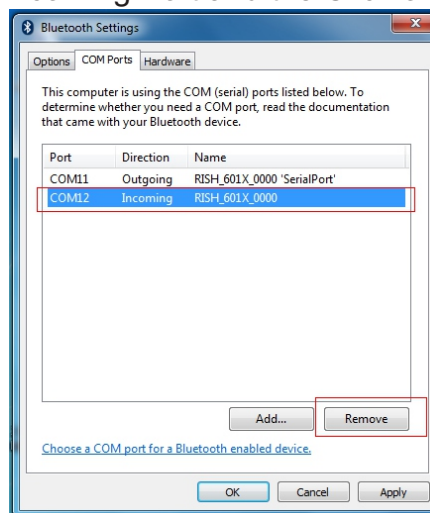


Fig. m: Remove Incoming port

g. After Removing Incoming port, you will only see outgoing port. Now open the Rishabh Datalogger Software, when you click on scan to find the meter.

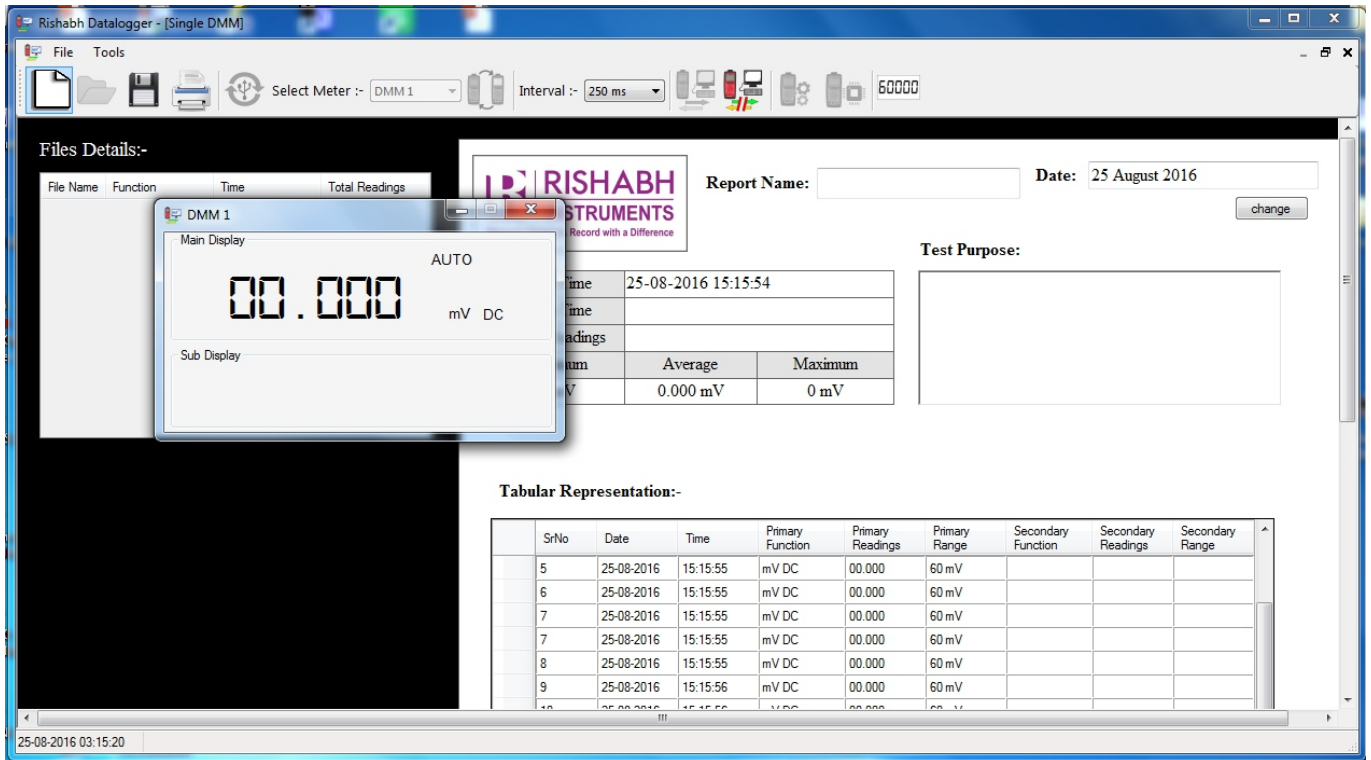


Fig. n: Rishabh Datalogger Software

3. Window 8

a. Right click on Bluetooth icon & click on Add a bluetooth device or open PC and devices and select Bluetooth in it.

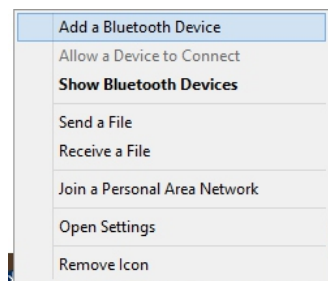


Fig. o: Bluetooth Menu

b. After opening PC and device, it will start the search for device. Click the device which is required to be added and then click on PAIR.

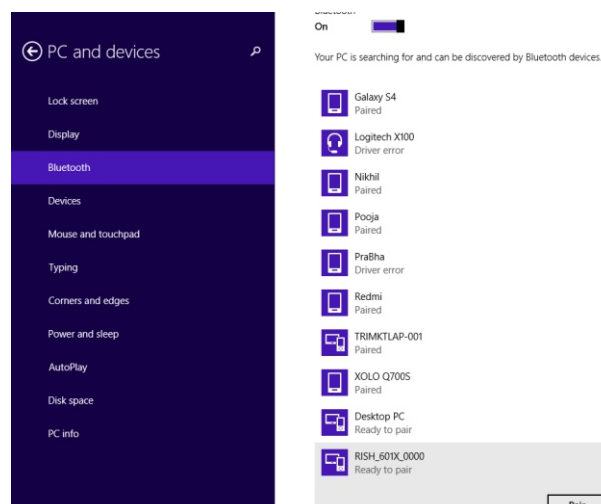


Fig. p: Pairing Bluetooth device

c. It will start to add the device. After Completion, close the PC and Device. Again right click on Bluetooth icon and select OPEN SETTING (Refer fig. o). Now we have to remove incoming port under COM PORT option as shown in fig. q

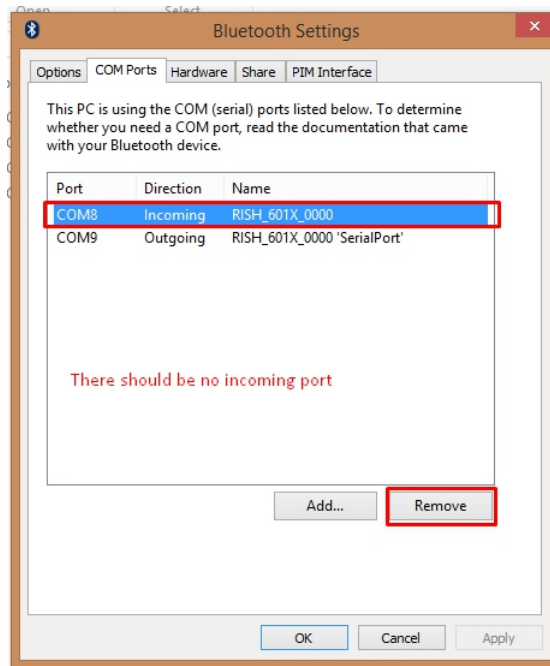


Fig. q: COM PORT setup

d. After removing Incoming Port, click OK and close the Bluetooth setting. Now open the Rishabh DataLogger Software.

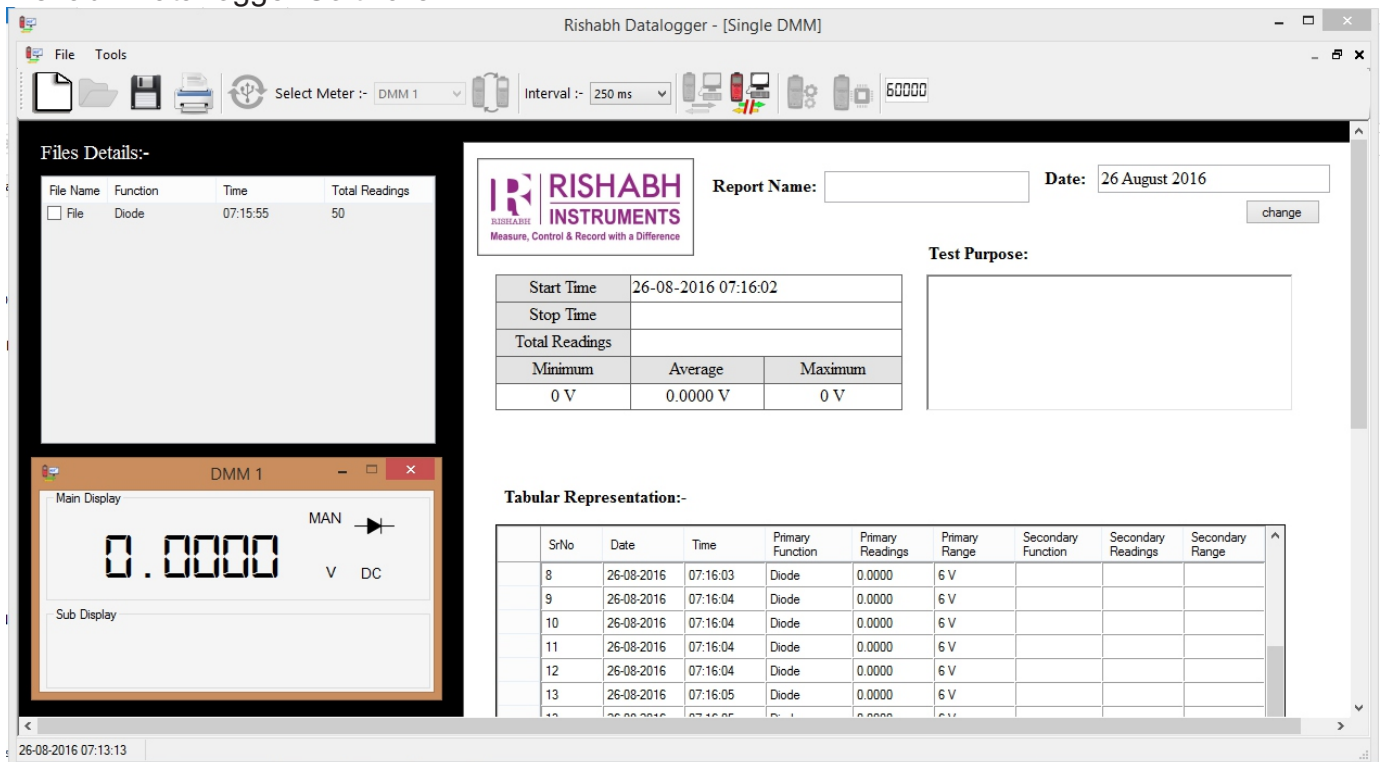


Fig. r: DataLogger Software

4. Window 10

a. Right click on Bluetooth icon & click on Add a bluetooth device or open Devices and select Bluetooth in it

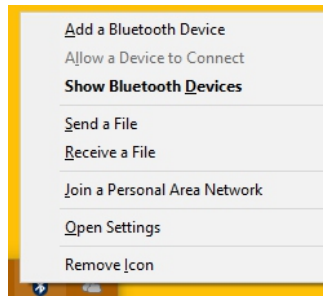


Fig. s: Bluetooth Icon Menu

b. After opening Device, it will start the search for device. Click the device which is required to be added and then click on PAIR.

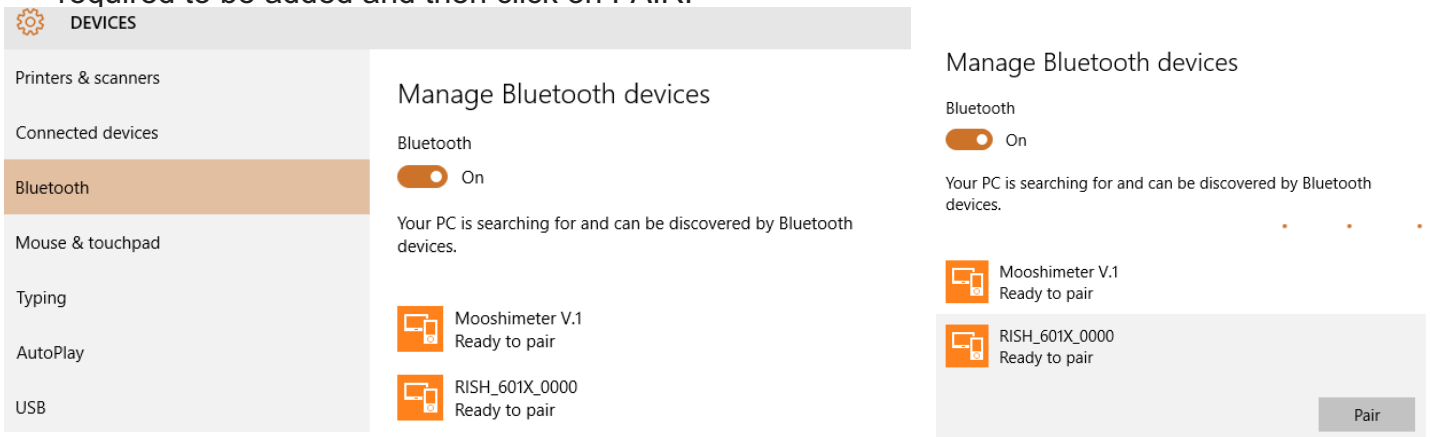


Fig. t: Bluetooth device selection & pairing

c. It will start to add the device. After Completion, close Devices. Again right click on Bluetooth icon and select OPEN SETTING (Refer fig. s). Now we have to remove incoming port under COM PORT option as shown in fig. u

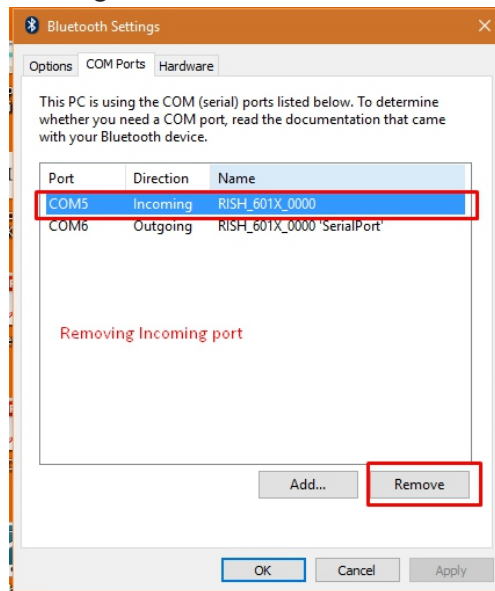


Fig. u: Remove Incoming port

d. After removing Incoming Port, click OK and close the Bluetooth setting. Now open the Rishabh DataLogger Software.

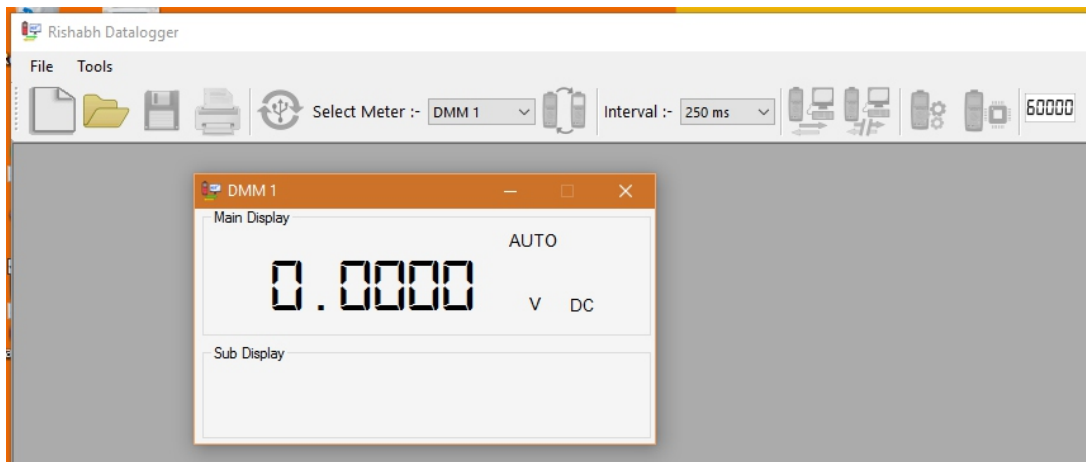
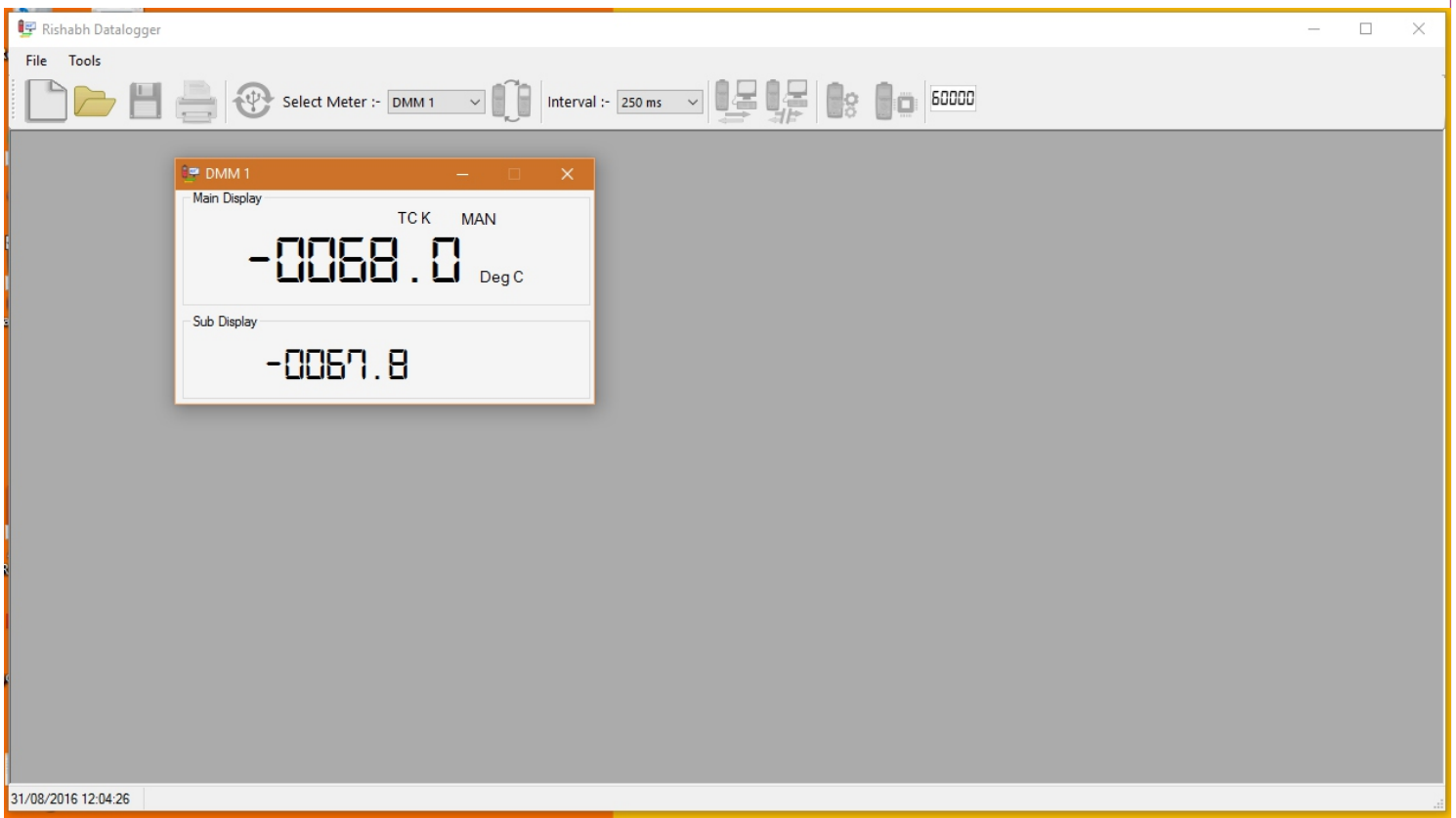


Fig. v: Rishabh Datalogger Software